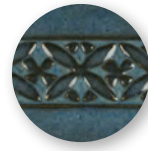


LAYERING
Potter's Choice

Celadon

Cone 5/6



PC-12 Blue Midnight over C-10 Snow



PC-21 Arctic Blue over C-10 Snow



PC-23 Indigo Float over C-10 Snow



PC-25 Textured Turquoise over C-10 Snow



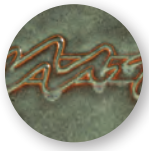
PC-27 Tourmaline over C-10 Snow



PC-28 Frosted Turquoise over C-10 Snow



PC-32 Albany Slip Brown* over C-10 Snow



PC-33 Iron Lustre over C-10 Snow



PC-34 Light Sepia over C-10 Snow



PC-36 Ironstone over C-10 Snow



PC-37 Smoked Sienna over C-10 Snow

Clay: AMACO® White Stoneware No. 11

C-10 Layering Notes: Brush on three layers of base coat. Brush on three layers of top coat. (Let dry between coats.)

Firing: Test tiles have been fired to Cone 6

over
C-10
Snow

www.LayeringAmacoGlazes.com



f Join the conversation
www.facebook.com/groups/potterschoiceex

Reorder No. 11969E



PC-39 Umber Float over C-10 Snow



PC-40 True Celadon over C-10 Snow



PC-41 Vert Lustre over C-10 Snow



PC-42 Seaweed over C-10 Snow



PC-43 Toasted Sage over C-10 Snow



PC-45 Dark Green over C-10 Snow



PC-46 Lustrous Jade over C-10 Snow



PC-48 Art Deco Green over C-10 Snow



PC-52 Deep Sienna Speckle over C-10 Snow



PC-53 Ancient Jasper over C-10 Snow



PC-55 Chun Plum over C-10 Snow



PC-57 Smokey Merlot over C-10 Snow



PC-59 Deep Firebrick over C-10 Snow



PC-61 Textured Amber over C-10 Snow



The Art & Creative Materials Institute AP (Approved Product) seal certifies this product to be safe for use by all ages. Conforms to ASTM D-4236.



The Art & Creative Materials Institute CL (Caution Label) seal restricts this product from children under the age of 13. Older users must follow all cautionary labeling. Conforms to ASTM D-4236.

WARNING (PC-32): This product contains a chemical known to the State of California to cause birth defects or other reproductive harm.

Color may vary between printed copies.